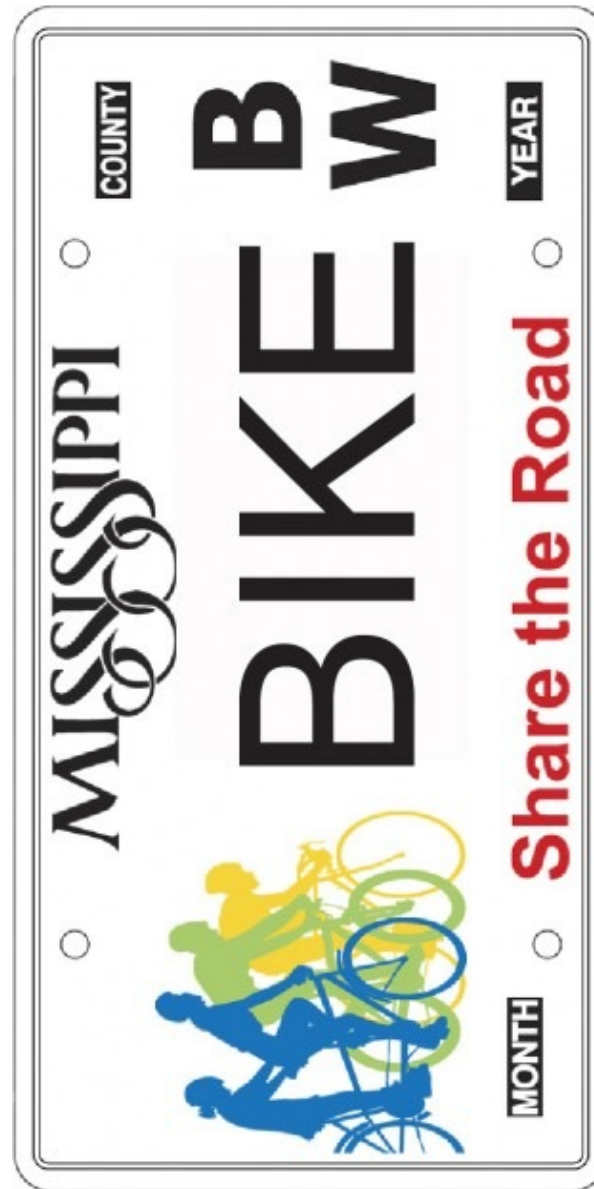


## If you are involved in a collision involving a motor vehicle:

- Call the police, wait for them to arrive
- File an official report!
- Do not negotiate with the driver
- Obtain the name & contact information of the driver & any witnesses
- Seek medical attention if needed and keep records of any treatment
- Take down as much of the description as possible (make, model, color, tag #)
- Take photos of the scene as soon as possible (from different angles)
- Take additional photos of damages to bicycle and physical injuries.
- Contact a lawyer if necessary.
- Visit [www.changelanestopass.com](http://www.changelanestopass.com) to fill out an online incident report

**[www.changelanestopass.com](http://www.changelanestopass.com)**



**ALL PROCEEDS FROM THE  
"SHARE THE ROAD"  
LICENSE PLATE SUPPORT  
BICYCLE SAFETY EFFORTS IN  
MISSISSIPPI.**

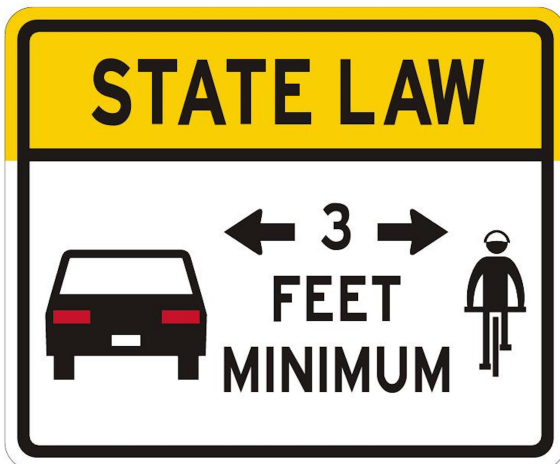
**ASK FOR IT AT YOUR LOCAL TAG OFFICE TODAY!**

## BICYCLE SAFETY IN MISSISSIPPI

**What everyone should know...**



**BIKE WALK  
MISSISSIPPI**



From the John Paul Frerer Bicycle Safety Act, 2010

### Bicyclist Rights & Responsibilities

#### **Bicyclists must obey traffic Laws:**

- This means bicyclists must obey stop signs, traffic signals and indicate turns!

#### **Road position:**

- Ride on the **RIGHT** - this means to ride **WITH Traffic**
- Bicyclists must ride as close as practical to the right hand edge of roadway except when:
  - Unsafe to do so
  - When passing another bicycle or vehicle
  - When preparing for a left turn
  - When proceeding straight where right turns are permitted and
  - When necessary to avoid hazardous conditions

**Bicyclists may not ride more than two abreast** (two bicycles side by side) except when on roads exclusively for bicycles (trails, paths, closed roads).

**Bicycles are not allowed on INTERSTATES.**

### Motorist Rights and Responsibilities

According to the 2010 John Paul Frerer Bicycle Safety Act, Motorists are required to give a **MINIMUM of THREE FEET** when passing a bicyclists.

It is also unlawful to harass, taunt or maliciously throw an object at or in the direction of any person riding a bicycle in Mississippi.

**\*PLEASE NOTE: IT IS LEGAL FOR MOTORISTS TO CROSS THE DOUBLE LINE IN ORDER TO PASS SAFELY.**

PROVIDED IN PARTNERSHIP WITH BIKE WALK MISSISSIPPI

# BICYCLE SAFETY IN MISSISSIPPI

## 1. ABC QUICK CHECK

**AIR:** Squeeze your tires, fill with air until firm to the touch.

**BRAKES:** Check your brakes before riding. Replace brake pads if they are wearing down.

**CHAIN, CRANK, CASSETTE:** Spin your chain backwards and check for rust or debris. Check to see if your chain has sufficient oil and is running smoothly.

## 2. RIDING AT NIGHT

Wear bright, reflective clothing.

Use a bright headlight AND rear light

Use Caution; You may see a car coming before they see you.

## 3. USE TURN SIGNALS

Use turn signals when turning right or left.

You may point in the direction you are turning or use traditional signals as illustrated.

## 4. FITTING A HELMET

When you shake your head from side to side, a correctly fitted helmet will stay in place.

The League of American Bicyclists recommends two-fingers width between your eyebrows and helmet; Side straps making a "Y" below the ear and recommends less than 1/2" between your chin and the strap.

## 5. TRAIL ETIQUETTE

Ride on the right side (just like you would on the road) unless indicated otherwise.

Be courteous and try not to surprise other users.

Give a clear signal when passing a bicyclist or pedestrian. Use your bell or voice. A typical warning used when approaching is "on your left".

**EVERYONE HAS A RIGHT TO RIDE SAFELY  
NO MATTER HOW THEY CHOOSE TO TRAVEL.**

EVERYONE RIDING BICYCLES IN MISSISSIPPI HAVE THE SAME RIGHTS AND RESPONSIBILITIES AS A VEHICLE ON THE ROAD.

PLEASE BECOME AWARE OF THE CURRENT MISSISSIPPI LAWS REGARDING BICYCLING IN MISSISSIPPI.

LEARN MORE AT: [WWW.CHANGELANESTOPASS.COM](http://WWW.CHANGELANESTOPASS.COM)



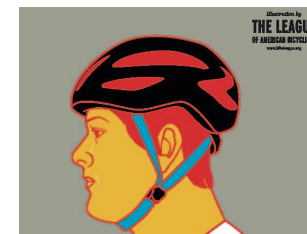
## 1. ABC QUICK CHECK



## 3. USE TURN SIGNALS

Signals from left to right:

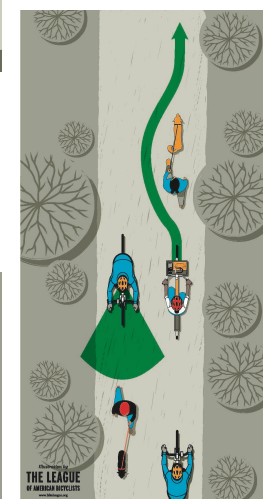
1. Turning left
2. Turning right (traditional)
3. Stopping
4. Turning right



## 4. FITTING A HELMET



## 2. RIDING AT NIGHT



## 5. TRAIL ETIQUETTE

This brochure made possible by: Bike Walk Mississippi, Illustrations provided courtesy of the League of America Bicyclists, Photo by Thortis Photography

**FOR MORE INFORMATION VISIT: [WWW.CHANGELANESTOPASS.COM](http://WWW.CHANGELANESTOPASS.COM)**